

FEATURES

- To be mounted on the exhaust port of a solenoid valve to protect internal parts from the environment

GENERAL

	Bronze	Sintered st. steel	Porous plastic
Differential pressure	0 to 10 bar	0 to 10 bar	0 to 10 bar
Fluid temperature range	-10°C to +70°C	-10°C to +70°C	-10°C to +70°C
Ambient temperature range	-10°C to +70°C	-10°C to +70°C	-10°C to +70°C
Load loss	Minimum	Minimum	Minimum

CONSTRUCTION

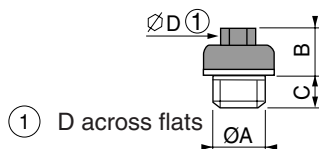
Body	Porous bronze	Sintered stainless steel	Porous plastic
Connection piece	Brass	Nickel-plated brass	Plastic
Pipe size	G 1/8 or G 1/4	G-NPT 1/8 to 1/2, M5	G 1/8 to G 1/2, M5



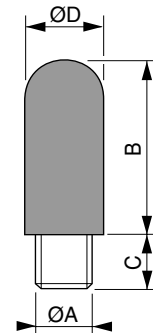
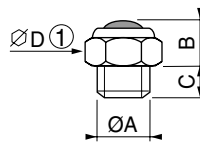
SPECIFICATIONS

pipe size (G)	catalogue number		
	BRONZE (set of 2)	SINTERED STAINLESS STEEL	POROUS PLASTIC
G 1/8	97701875	34600418	34600406
G 1/4	97701876	34600419	34600407
G 3/8	-	34600478	34600408
G 1/2	-	34600479	34600409
M5	-	34600484	34600405
NPT 1/8	-	34600482	-
NPT 1/4	-	34600483	-
NPT 3/8	-	34600480	-
NPT 1/2	-	34600481	-

DIMENSIONS (mm), WEIGHT (kg)



① D across flats



POROUS BRONZE (set of 2)					
catalogue number	Ø A	B	C	D	weight
97701875	G 1/8	7	5	7	0,004
97701876	G 1/4	10	6	9	0,010

SINTERED STAINLESS STEEL					
catalogue number	Ø A	B	C	D	weight
34600418	1/8	10	6	13	0,006
34600419	1/4	11	8	16	0,010
34600478	3/8	11	9	19	0,014
34600479	1/2	14	9	24	0,023
34600484	M5	4,5	3,2	8	0,001

POROUS PLASTIC					
catalogue number	Ø A	B	C	D	weight
34600406	G 1/8	27	6	13	0,002
34600407	G 1/4	34	7	15	0,004
34600408	G 3/8	55	11	18	0,006
34600409	G 1/2	62	12	23	0,010
34600405	M5	16	5	7	0,0005

